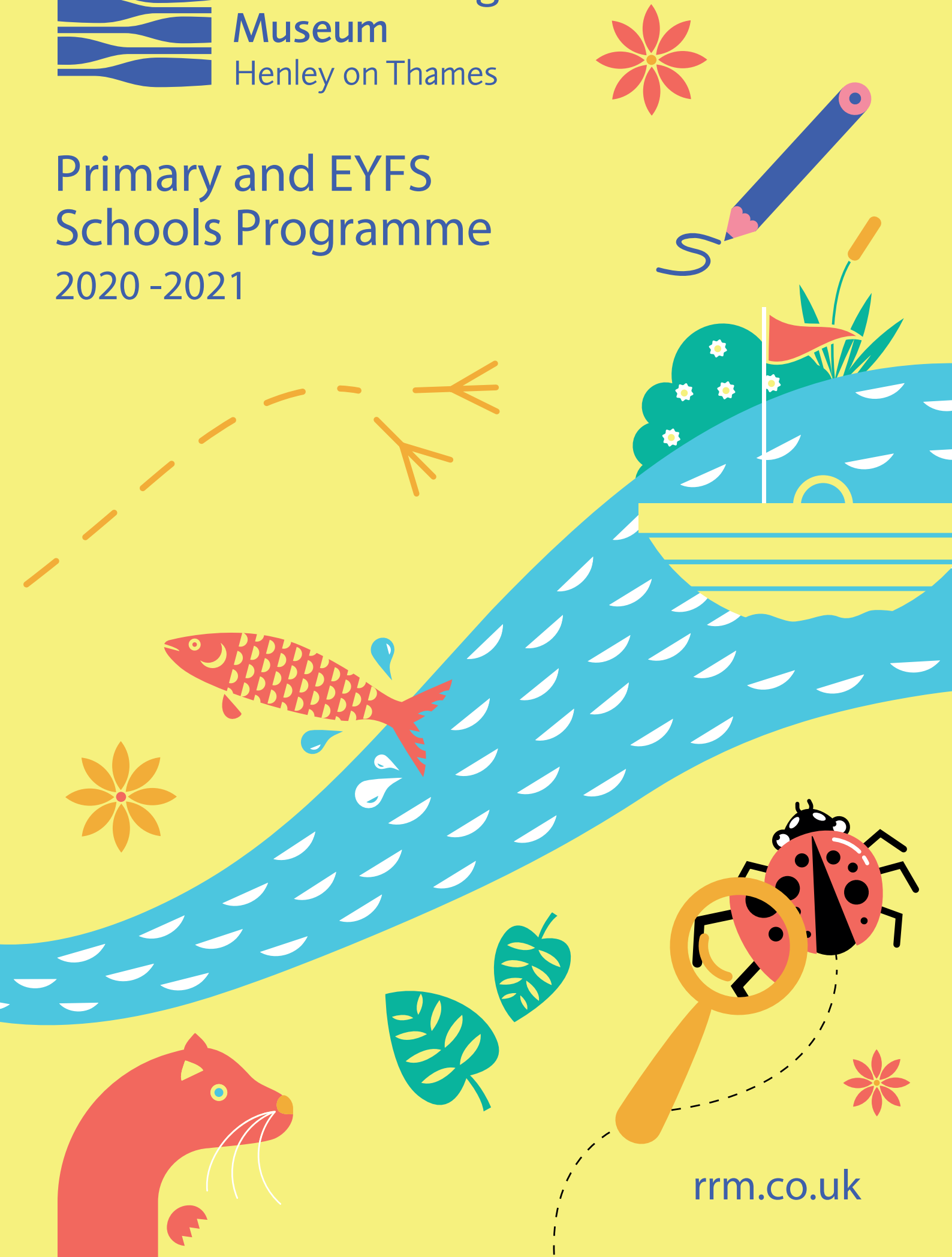


River & Rowing  
Museum  
Henley on Thames

# Primary and EYFS Schools Programme 2020 -2021



[rrm.co.uk](http://rrm.co.uk)

Practical experiments and creative activities in a beautiful riverside setting, combining object investigation with exploration of the natural world.

Our award-winning education service reaches over 11,000 school children per year!



## Foundation Stage

### Toad & Friends

Creative arts, music and dance based on the story of the Wind in the Willows.

### Sporting Ted

Discover Sporting Ted's rowing adventures!



## Key stage 1

### Boat Trail

Discover boats in and outside the Museum and make a mini boat.

### Ugly Bug Ball

Investigate minibeast habitats and life-cycles. Also available for Foundation Stage.

### Liquid Maths

Improve maths skills through estimating and measuring capacity, volume, length and number.

### Materials

Investigate materials and their properties. With a Snowman twist!

## Key stage 1 & 2

### Paint me a River or Print me a River

Create beautiful paintings or screen prints inspired by the Thames.

### The River of Life

Discover living things – plants animals and their habitats in the river environment.

### Wind in the Willows

Connect Grahame's characters with the habitats and wildlife that inspired them.

### Building Bridges

Practical experiments and a visit to Henley Bridge.

### John Piper

Screen printing, sketching, painting and creative mark making inspired by the work of this dynamic local artist.

## Key stage 2

### Understanding Rivers

Practical experiments and a river walk to explore the natural and managed river.

### From Stone Age to Iron Age

Try pre-historic art and explore changes in culture and society.

### Forces in Action

Investigate the forces in how boats float and move and make junk model boats.

"It helped me understand my topic on rivers."

Year 5 pupil

### Time Travellers

Discover changes through the ages through real Henley stories.

### Locality

Developing humanities skills, exploring settlements and stories from the local area.

### Rowing for Gold

Discover what it takes to be an Olympic rower, comparing training, nutrition and kit with a Tokyo twist for 2020.

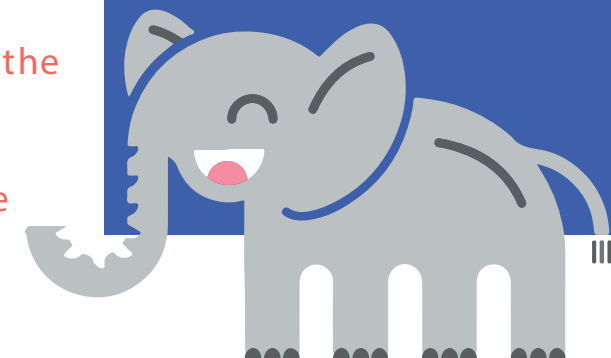
"The visit has brought the classroom learning to life. The activities were engaging and suited the age range. An all-round wonderful visit."

Year 4 teacher

## Upcoming exhibitions

Get in touch for details on our special workshops to accompany these exhibitions.

Elmer and Friends: The Colourful World of David McKee  
Dec 2020 – Spring 2021  
Elephantastic! EYFS & KS1 cross-curricular workshop.



"The tutor-led activities were very child-centred, appropriate and delivered beautifully."

Foundation Stage teacher

Booking: [edbookings@rrm.co.uk](mailto:edbookings@rrm.co.uk)

01491 415605

English Maths Science History Geography Art and Design Music PE

# Booking a Visit

Booking is essential for all education groups.

Please call 01491 415605 or email [edbookings@rrm.co.uk](mailto:edbookings@rrm.co.uk)

## Prices

### Tutored workshop

£6.50 per pupil  
(minimum charge £110)

### Self-led visits

£3.50 per pupil

### SEN groups of up to 12

£65 for 1.5 hour tutored workshop  
(up to 12, additional at £6.50)

(all prices quoted are excluding VAT)

All accompanying adults are free.

## School Access Fund

Please ask for details of our Schools Access Fund, offering transport subsidies to schools with more than 20% of pupils eligible for pupil premium.

## Workshops

Workshops are divided into three sessions: two led by members of our experienced team of specialist Museum Tutors, plus one teacher-led gallery session.

Workshops start at 10am and finish at 2.15pm. We can accommodate up to 90 pupils at a time.

## Self-Led Visits

Booking essential, free Gallery challenge cards available.

## Special Educational Needs

Adapted visits and half day sessions available.

## Access

The River & Rowing Museum is fully accessible to wheelchair users. Further details at [rrm.co.uk](http://rrm.co.uk)

## Shop

Pre-order goody bags or visit the Museum shop.

## Boat Trips

Enjoy a boat trip, prices online.

## Coach & Car Parking

The Museum has its own car park including coach-parking facilities. To ensure a smooth arrival and welcome for your group, we ask that coach parking is pre-booked.

The Museum has been awarded the Learning Outside the Classroom Quality Badge and the Sandford Award in recognition of the quality and safety of its educational provision.



[rrm.co.uk](http://rrm.co.uk)



Mill Meadows, Henley on Thames, RG9 1BF

01491 415600

River & Rowing Museum Foundation Registered Charity 1001051

Booking:  
01491 415605  
[edbookings@rrm.co.uk](mailto:edbookings@rrm.co.uk)